

Holy Island Competition



HOLY ISLAND COMPETITION

Holy Island - Scotland

Concorso internazionale per un complesso conventuale buddista e centro accoglienza visitatori

Ente banditore: Royal Inc. of Architects in Scotland, Samye Ling Tibetan Centre
Dimensione: 8400 sqm
Importo: L. 4.857.411
Progetto: 1993



Foto

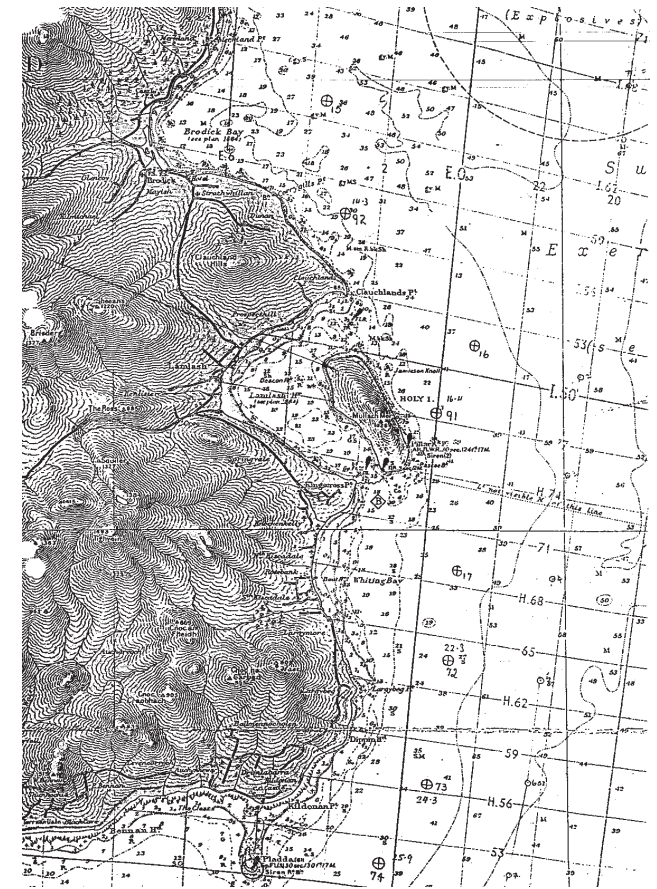
"Being the Primordial Breath originally pure, it raised, and it was the sky. The breath became then cloudy and descended, and it was the Earth". (Treatise on the Primordial Breath).

Faithful to "the unspoilt nature of the island", which has been remarked on the competition details, our proposal means just to play a part between earth and sky; we then gave ourselves the principles to touch as a less as a possible the natural soil, while at once letting our buildings speak and relate with environmental conditions.

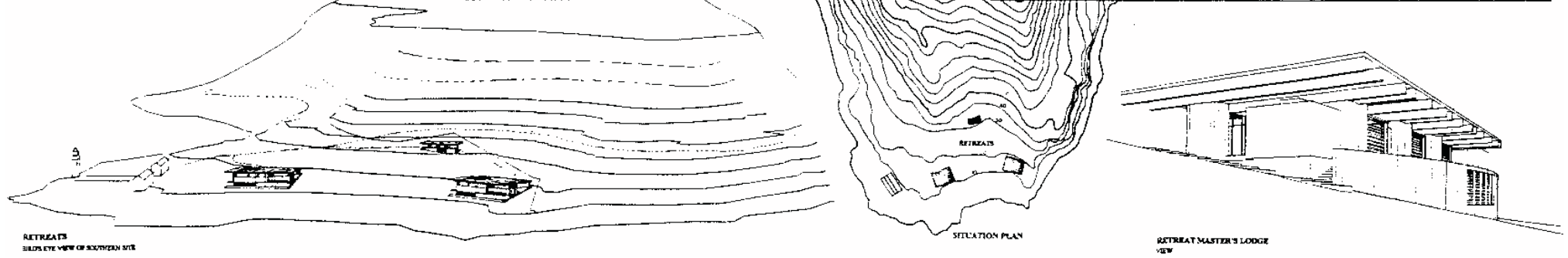
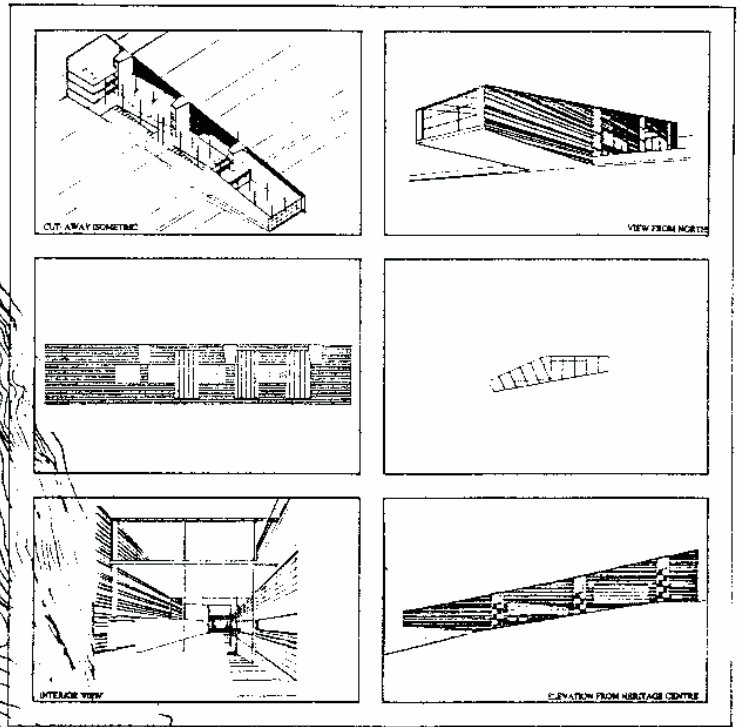
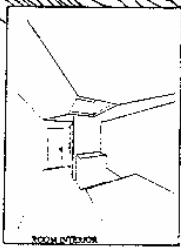
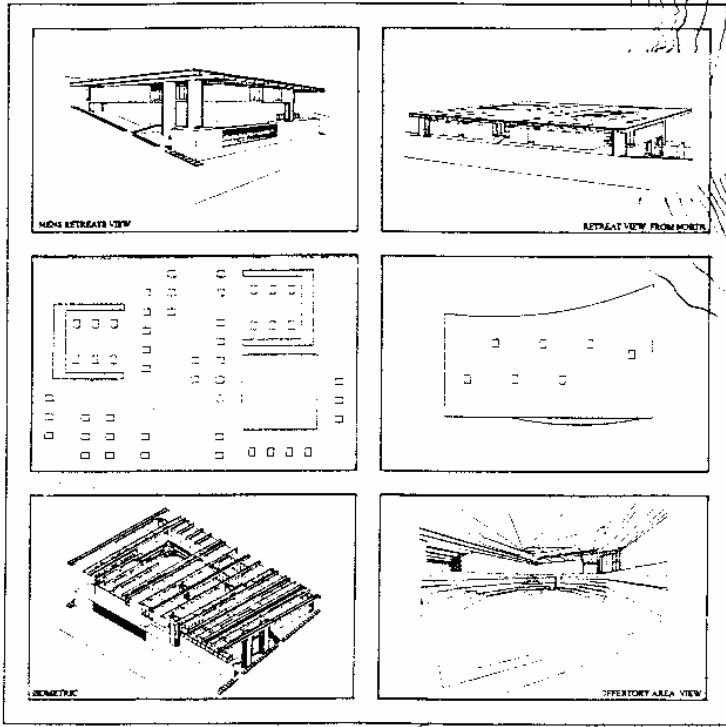
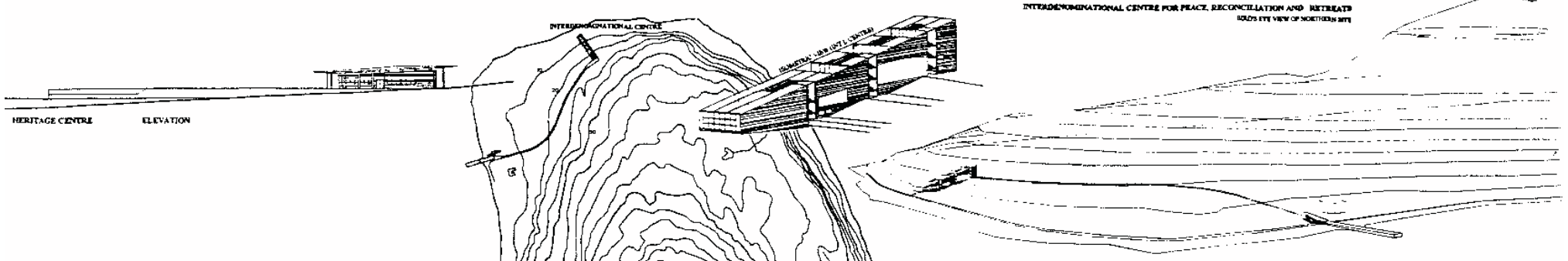
The more, we concerned about how to give the idea of "being" in a place such as the intense and meaningful milieu of Holy Island, with care for getting sheltered though not separated from its context.

The study of Feng Shui geomancy, together with philosophical introspection on natural and astral methods of building, have then directed our design towards bio-architecture, with regard for an appropriate use of materials, for a wisful composition of spaces, for an optimal orientation, and an expression of natural light.

The desire for realizing buildings organisms which could express, in a modern way, the suggestion requested by the organizers, through complex inherent meanings, is carried with the use of materials which may be simple, cheap, easily available and recyclable, and with the absence of juxtaposing finishings, thus emphasising the natural features of any single material. This gives also the possibility to distinguish different parts of construction that is possible to give to normal contractors from parts which can be worked out with no specialized builders.



Mappe



Posizione sull'isola delle nuove costruzioni

Holy Island Competition



HOLY ISLAND COMPETITION

Holy Island - Scotland

Concorso internazionale per un complesso conventuale buddista e centro accoglienza visitatori INTERDENOMINATIONAL CENTRE

Ente banditore: Royal Inc. of Architects in Scotland, Samye

Ling Tibetan Centre

Dimensione: 2442 sqm

Importo: L. 1.359.790

Progetto: 1993

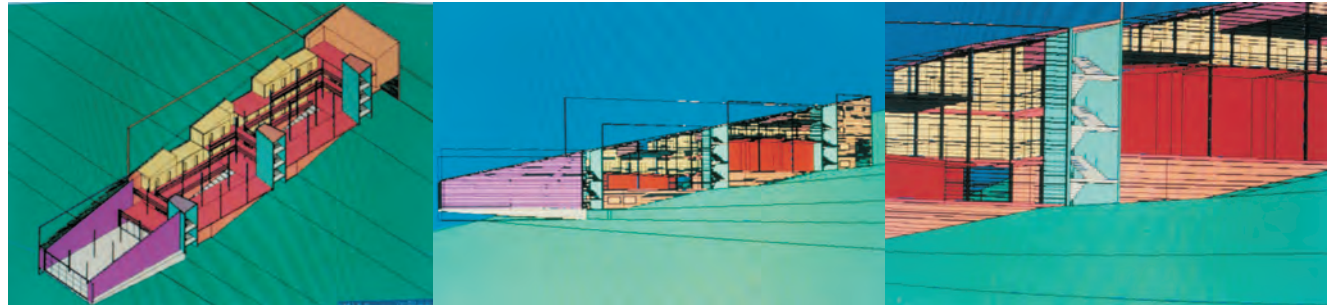


Foto del modello al computer

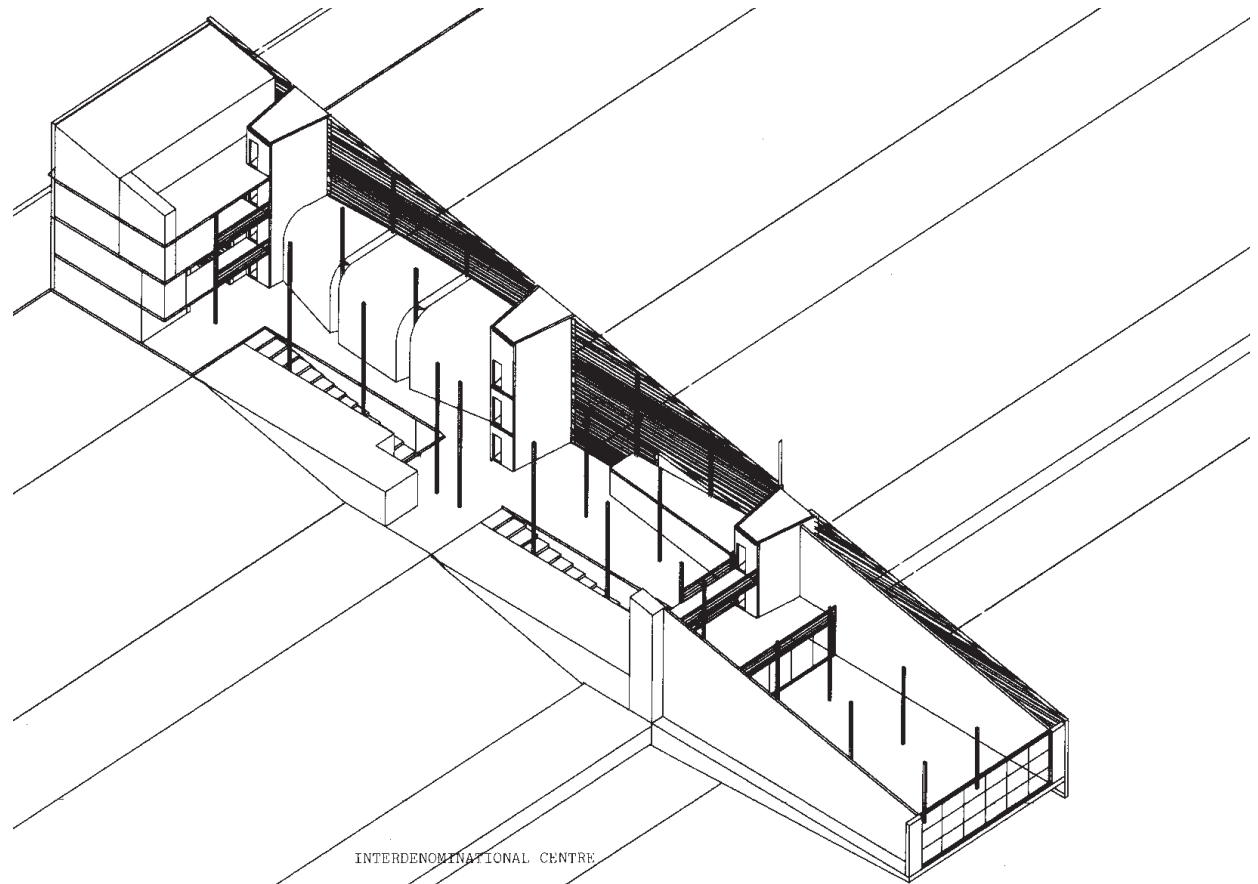
The visitors who approaches the island is first welcomed by the leaning of the Heritage Centre on the jetty, as an invitation to have a rest before taking a journey to the island. Then, the road to the Interdenominational Centre offers the view of the building by the side of the collective spaces, which can be seen through the transparencies of the facade.

The slope descending to the shore structures the idea for the building: an internal path generates from the island and projects itself towards the horizon. This is metaphorically intended as a peace message born from the community activities to the world, and culminating in a large space raised off the earth, where the open view over the water and the land is the most important feature.

The path is in form of a ramp designed after the landscape slope, that hollows the volume of a gallery. A forest-like wooden structure supports the "encrusting" of the floors. On the east side are the rooms, on the west side the collective spaces. This distinction feature to the composition of a closed and compact eastern side, built out of concrete blocks, and an open western side, paved in industrial screed and envelopped by an irregular sandwich wood lining, filled by a glass frame. This filter create diffusion of light in contraposition with zenith light on the ramp.

The involucre character of the building is underlined by the composition of the collective spaces, which create organic own ambients (conference halls, reading room). The main wooden structure regularly follows the ramp and becomes expressive in the final large hall.

This hall represent something really special, like sacred space or meaningful place, for calling one's own to mediate or pray, or for religious collective functions. A wide openable double wooden wall provides place for storing furniture and allows changing configurations.



Assonometria

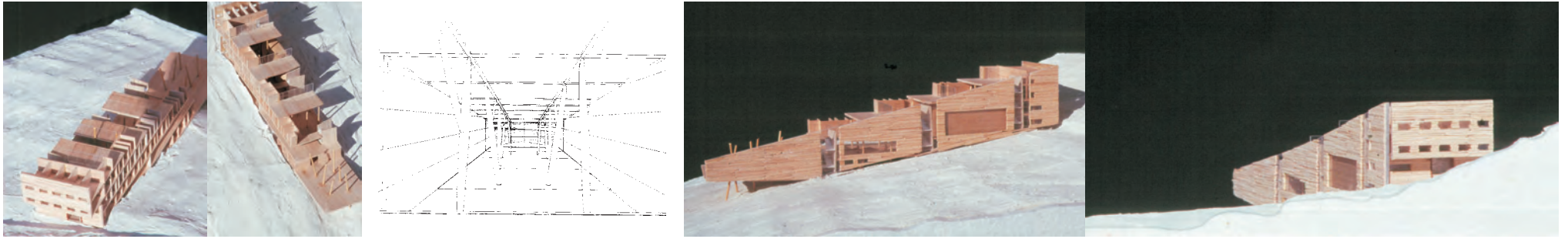
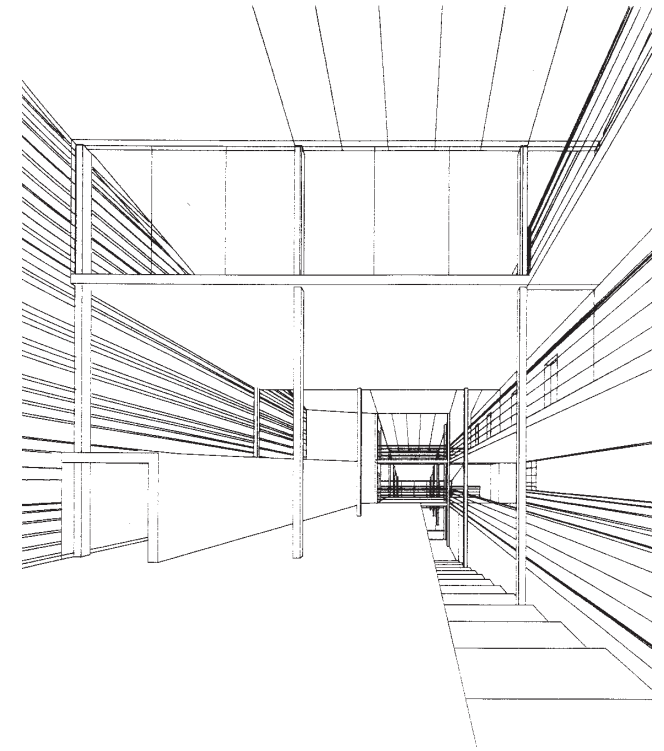
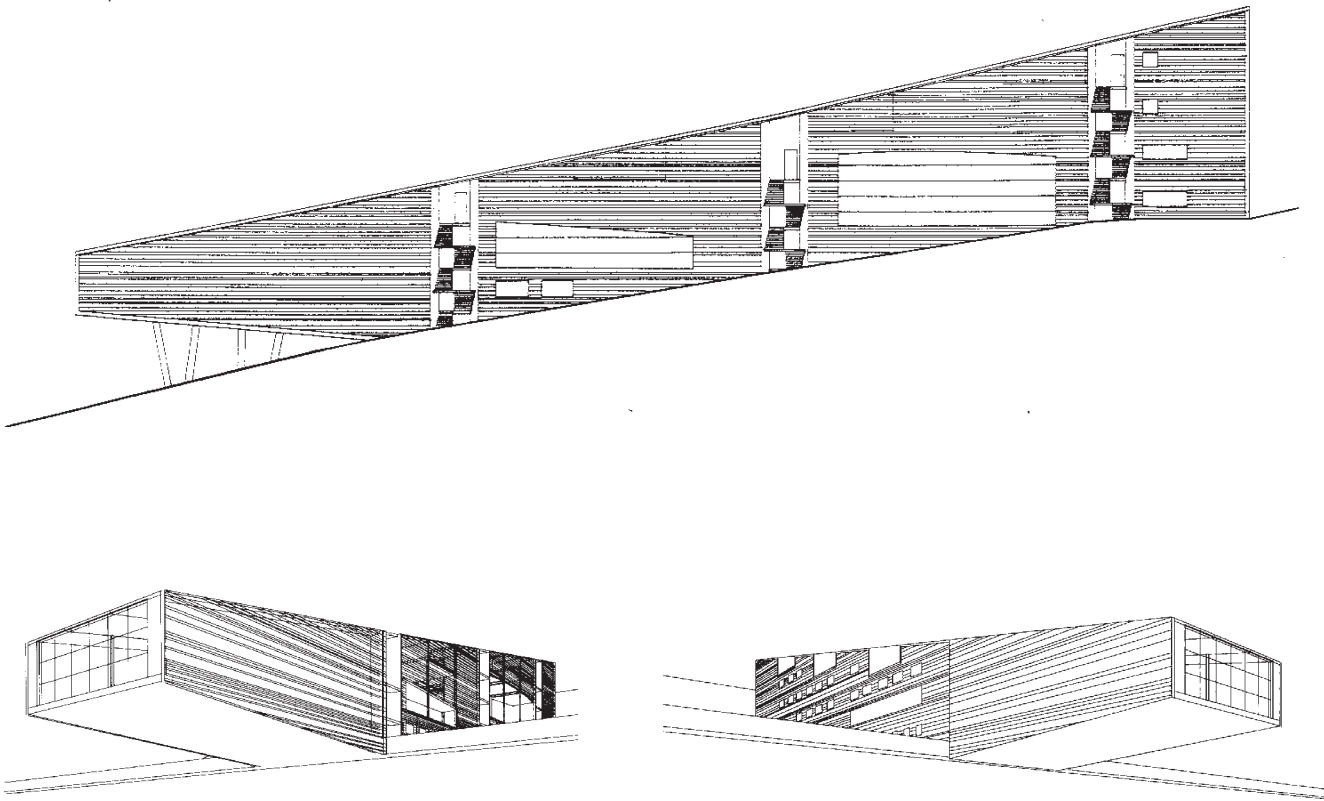
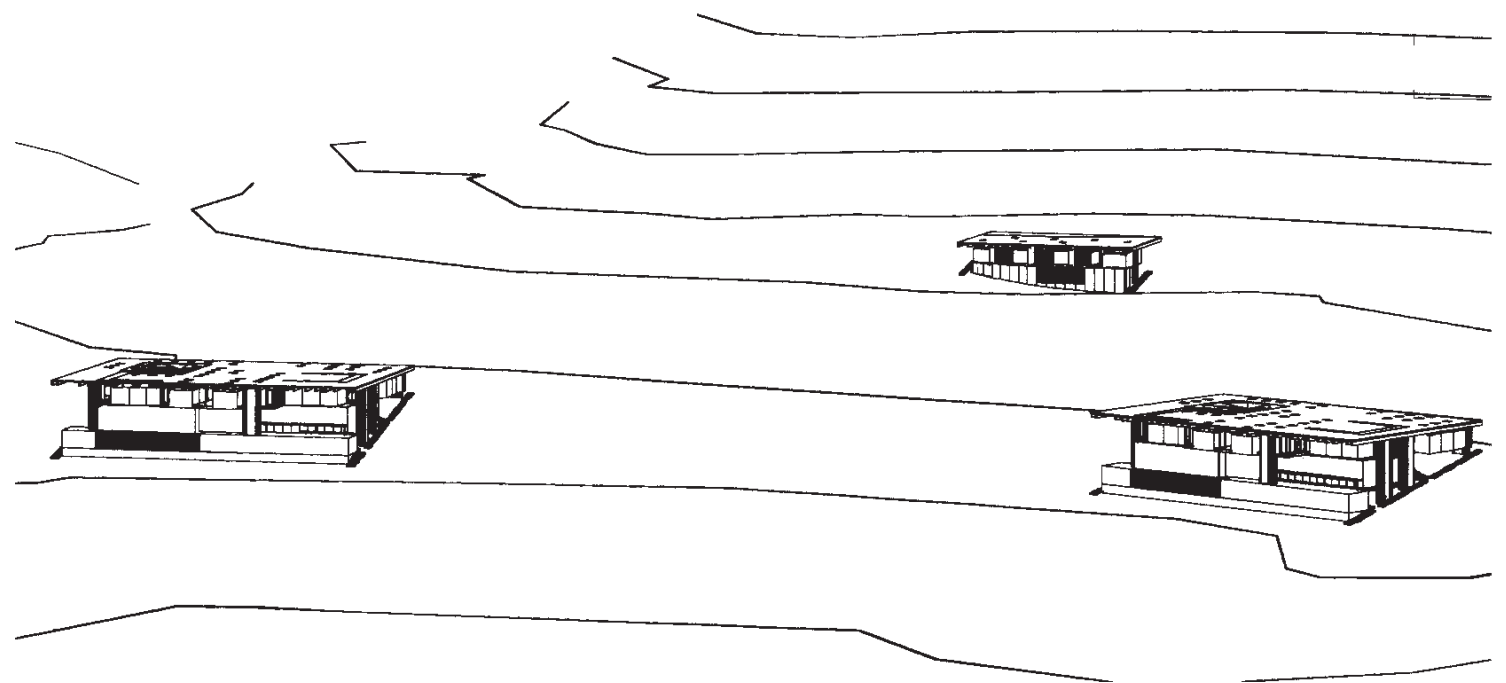


Foto e vista prospettica interno



Prospetti e viste degli interni e degli esterni

Holy Island Competition



HOLY ISLAND COMPETITION

Holy Island - Scotland

Concorso internazionale per un complesso conventuale buddista e centro accoglienza visitatori RETREAT CENTRES

Ente banditore: Royal Inc. of Architects in Scotland, Samye

Ling Tibetan Centre

Dimensione: 5.925 sqm

Importo: L. 2.240.360

Progetto: 1993

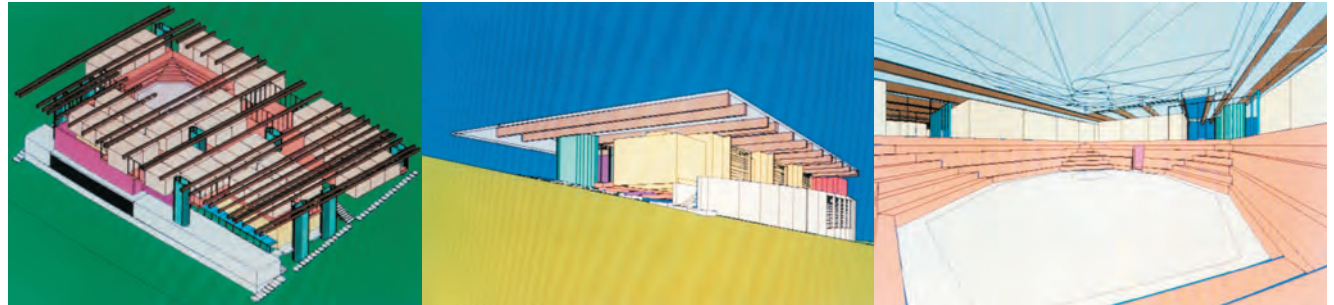


Foto del modello al computer

Three sheltering covers are simply posed on the slope, so that between them and the ground the retreat buildings can take form; and through the openings on the diaphragm, rooms, corridors and halls look to the sky for energy and light.

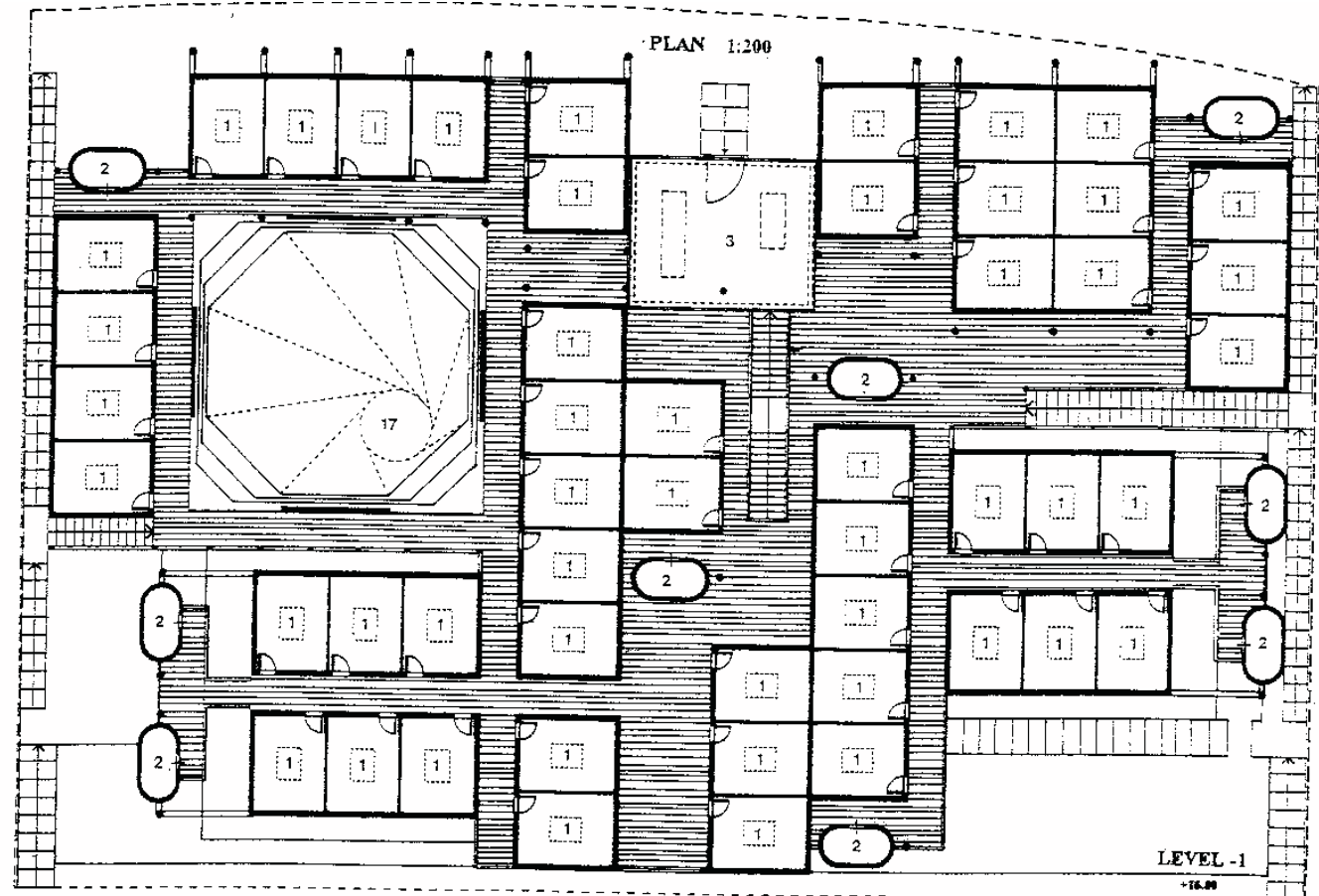
Ideally buildings lean themselves upon the existing soil, confirm it and conform natural landscape. The contact with the ground, in specific points, is linked to the main structure and to the paths. In that sense, at this stage of the project, a deep analysis of landscape arrangement is in a secondary view.

The roof defines private and introverted toplit rooms and collective spaces. Services form a base, thus more heavy and liked to earth. Between the two of them lie the main halls for yoga nad prayer.

All the retreat centres, conceptually are similar: orientation, number of levels, and dimensions (Master's lodge) are available, according to the ground's conformation, which makes changes to the basic scheme. The distinction between private and communal spaces is underlined from using different materials: the roof is in timber structure with covering in copper (or coated aluminium); the rooms level is in wood coated sandwich and glass screens; the communal rooms and services are in concrete or concrete blocks; floors are in bricks or wood (prayer room, yoga room, dining room).

Main structures, containing bathrooms blocks, are also in concrete. Master's Lodge is hierarchically composed along a central wall serving Lamas and attendants rooms, terminated by the Master's apartment, bigger than the others.

From inside to outside, in each situation view is mediated by rough timber strips.



Legenda: 1 - Celle monaci. 2 - Bagni. 3 - Ingresso. 17 - Gazebo/area di comunione.

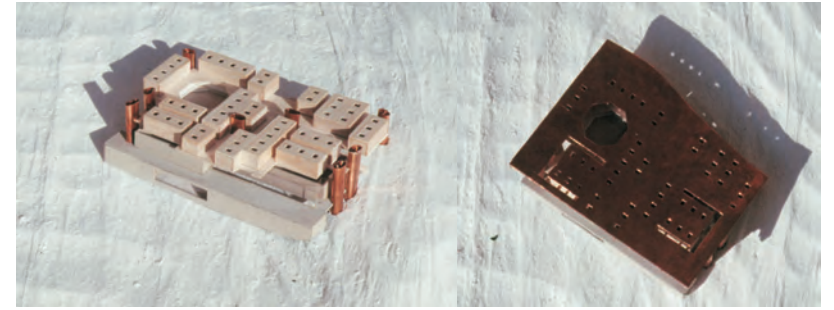
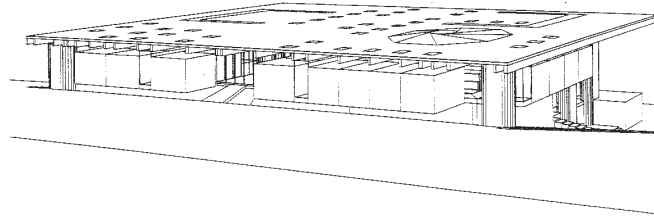
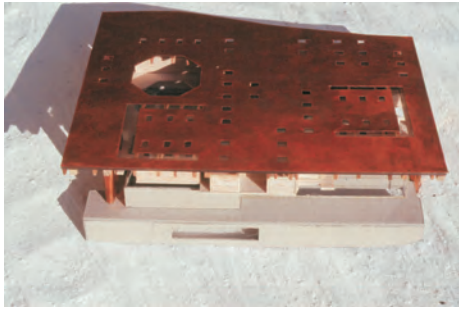
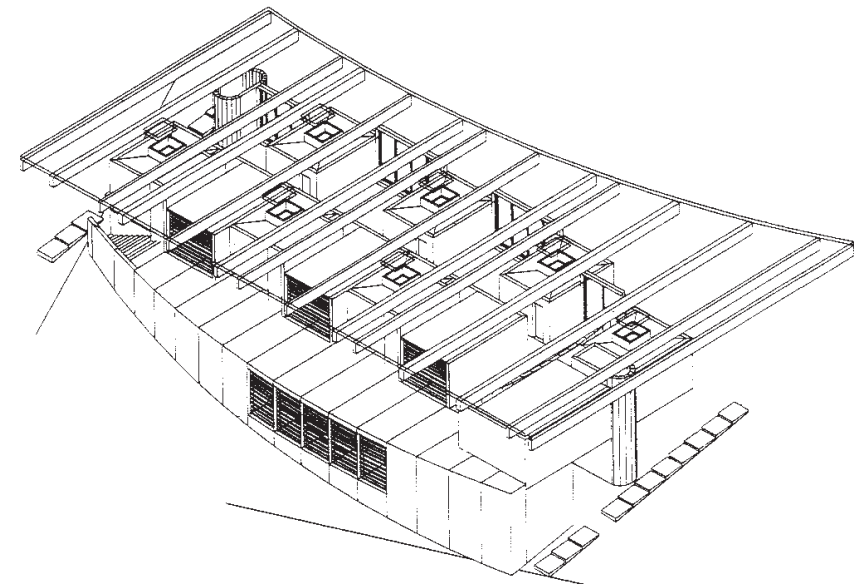
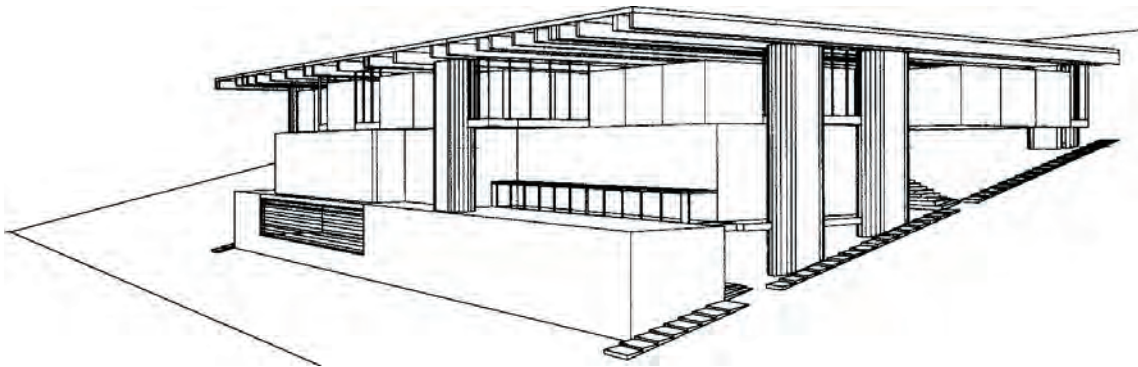
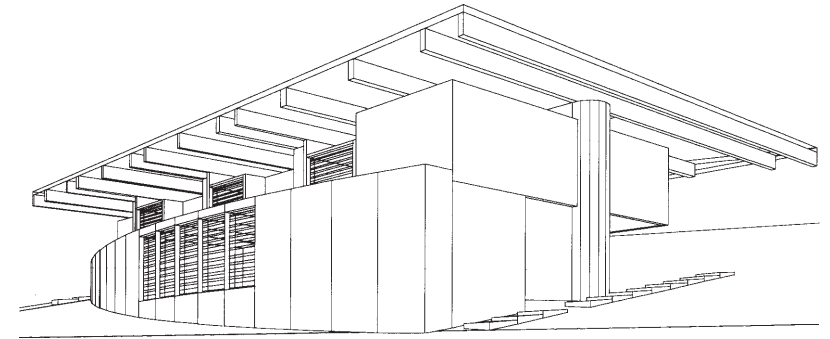
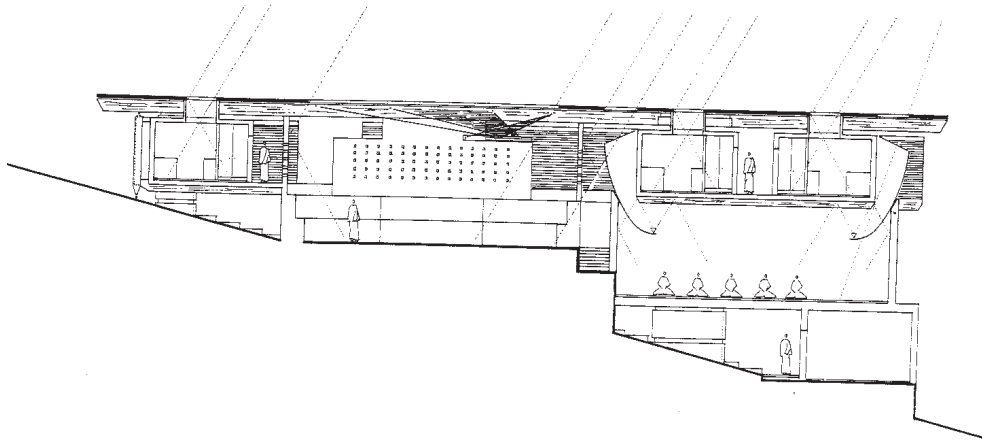


Foto e vista prospettica



Retreat centre: Sezione e viste prospettiche

Retreat master lodge: viste prospettiche